

# SHADING GLASSES FOR IPL CE LPLF-302

## 1 General remarks

All persons staying in the danger zone of strong light must use an appropriate protector. This product protects user from accidental exposure of strong light. This product meets the basic safety and health requirements of PPE regulation (EU) 2016/425, and harmonized standard EN 166: 2001, EN 170: 2002.

**Note:** Please check the CE declaration form from each page of the corresponding product at the following URL.  
<https://www.yamamoto-kogaku.co.jp/en/ce/>



**WARNING**

- Do not remove this product while it is being irradiated with strong light such as flash lamp.
- ※ This glasses will reduce the light of the flash lamp, but may be insufficient for more intense light.
- Don't look directly into the flash lamp when wearing this product as it may cause eye injury and lens damage.
- Do not use as a shield for welding.
- Do not use this product if you receive a large amount of light energy or damage even once.
- Before use, please be sure to check the frame or lens for peeling of the crack or coating of the lens. In such a case, please stop using this product.

**CAUTION**

- Substances that may harm the health or hygiene of the product wearer or other people who come into contact with the product are not confirmed in this product.
- May cause allergic reactions to people sensitive to substances that may come into contact with the wearer's skin.

## 2 Storing

- After use, please remove dirt from the product. Please put it in a case as necessary and keep them in a place without dust.
- Keep in custody at the place that is free from sun light, high temperature, exposure to organic solvents.

## 3 Cleaning

- When the lenses are stained with dirt, dust, iron powder and oil, you must soak these lenses into water and remove such stains with finger tip and wipe them with soft cloth.
- The resin part of this product may be deformed or broken depending on the type of organic solvent, acid and alkali. Do not use these chemicals for cleaning.
  - If these adhere, wash in the same way as ( i ) above.
- If disinfection is required, wipe the product with a soft cloth containing a disinfection alcohol. After wiping off the disinfection alcohol well, please use it.

## 4 Expiration date for use

In case of following situations, please change the product to new one without using it.

- Bad condition such as scratches and cracks are found.
- After the product receives strong impacts even if it has normal appearance.
- Case where some product damage is seen.
- After exposing against strong light and high temperature, the change of color and deformation of the product might be found.
- Three years later, the user should replace the product even under normal use and conditions.

## 5 Meaning of markings

In order to be able to use the glasses as intended, certain markings have to be affixed to the frame which have the following meanings:

Scale number UV-filter according to EN170	Symbol for increased robustness
2-3 YL 1 S - 166 S CE	
Identification of the manufacture	Optical class

## 6 Certification body

The products of our company listed in this information brochure have been type-tested by

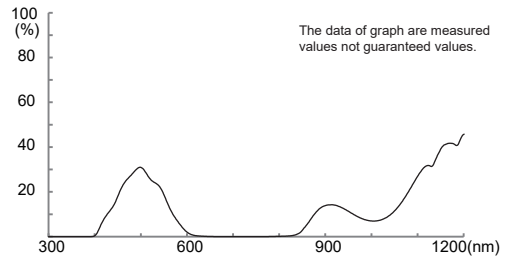
ECS GmbH  
Huettfeldstrasse 50 73430 Aalen, Germany  
Notified body 1883

and are subject to permanent quality controls. Therefore, this product is allowed to be marked with

## 7 Absorption curve

In the following the spectral characteristics of the filters is given:

Luminous Transmittance	14 %
<b>Note:</b> The data of graph are measured values not guaranteed values. When luminous transmittance is less than 20%, please increase lighting in the workplace Depending on the type of filter, warning lights and warning notices might be difficult to read. Optical class 3 filters are not intended for long term use.	

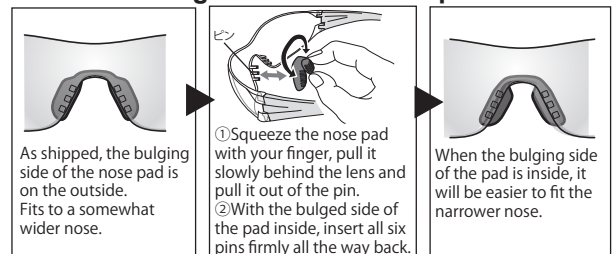


## 8 Field of application

This product protects user against scattered light and diffuse reflection of a Intense pulsed light(IPL). This product has following features:

Shade number UV-filter (EN170)	Optical class (EN166)	Mechanical strength (EN166)
2-3	1	S

## 9. How to change the size of nose pad



**Note :** Make sure to attach and remove the nose pad slowly and securely. Pulling the pad too quickly may cause damage. Also, if the pad is not fully inserted, the pad may come off the lens.

Manufacturer

YAMAMOTO KOGAKU CO.,LTD.

25-8,Chodo-3,Higashi-osaka City, Osaka 577-0056,JAPAN